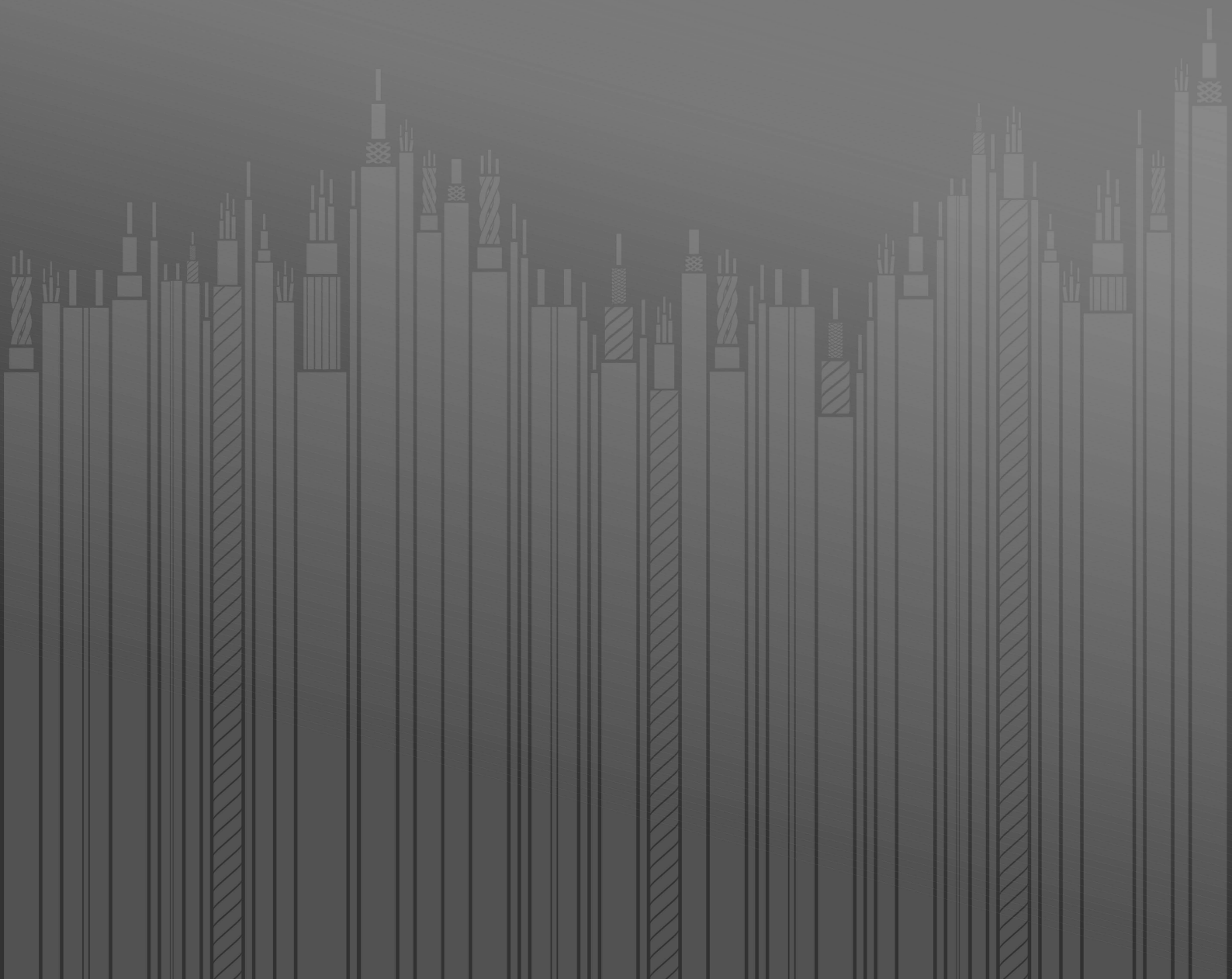
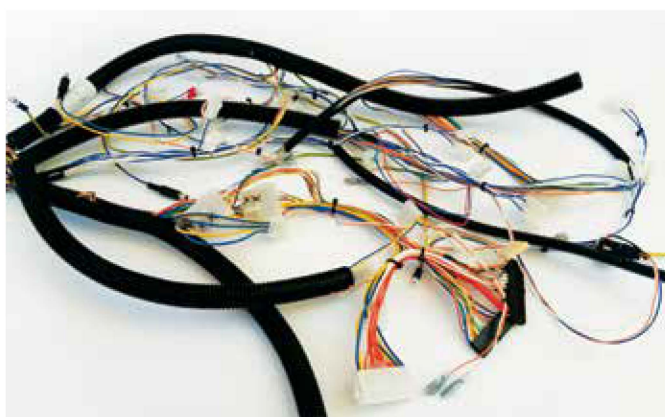
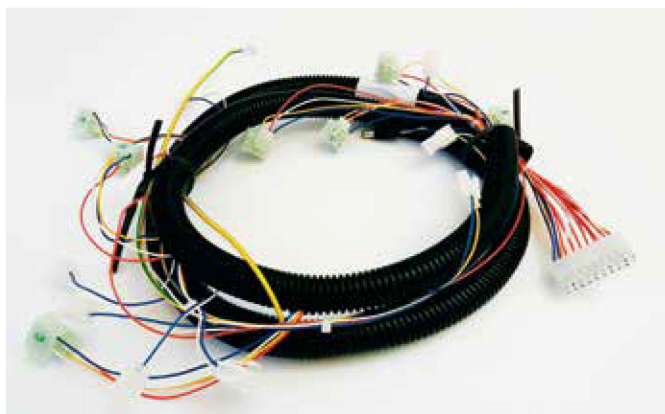


CABLE HARNESSSES



Cable harnesses production

Proposal for manufacturing of cable harnesses is contributed with cooperation with customers in order to maximally meet the requirements on functionality, price and quality. To our customers we are capable to suggest suitable materials and technologies to achieve the desired result.



Production is then to be implemented on the basis of approved substrates, such as drawing documentation or reference samples. Our specialty is the production of cable harnesses in small or medium-sized series.

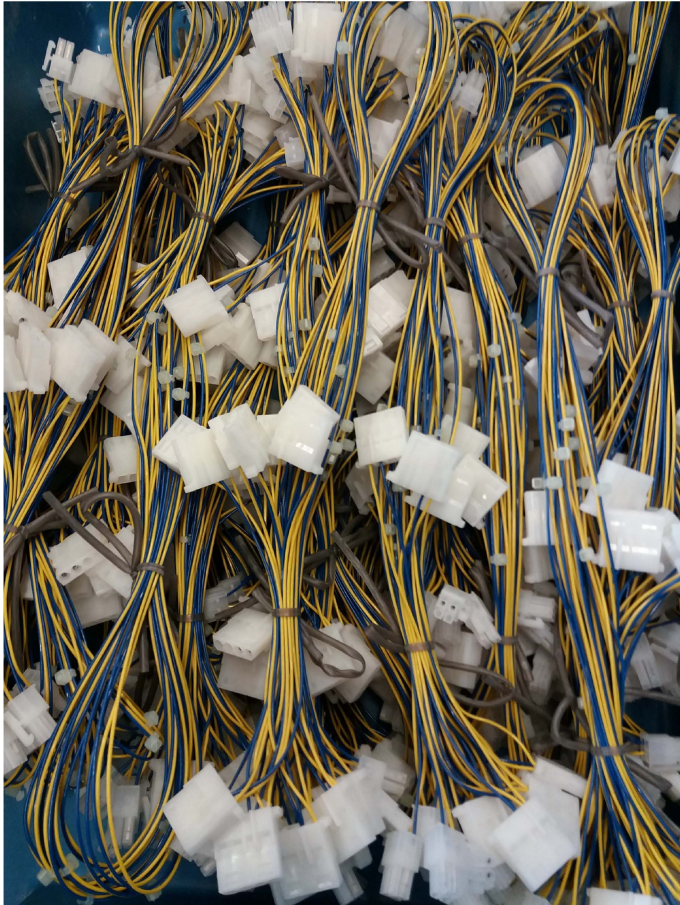


Materials and parts used for production of cable harnesses depend on the specification, intended use of the customer and its request. Wires can be printed along their entire length with the possibility of different label or its orientation. Cable harnesses are processed on the balancing tables with templates. This ensures accurate shaping of individual branches of cable harnesses for their use in electrical devices and vehicles.



Cable harnesses production

A test tool can be used for testing the electrical function of the harness. This test tool can be structurally prepared and programmed according to the needs of individual applications, where the cable harness is to be mounted.



Some preparatory work can be automated, for example:

- Automatic and semi-automatic cutting of wires and cables including stripping - ALFA 477, KOMAX 230, SCHLEUNIGER PS9500
- Automatic and manual crimping of finishing elements (connectors, pins) on wires is performed on pressing machines TYCO ELT, UK.
- Fasteners: MOLEX, JST, JAE, TYCO, SHRINKTECH, HellermannTyton
- Wires and cables from own production or NKT s.r.o. Tele-Fonika kabely, Lamela Electric
- Solder splices and tinning the wire ends using the lead-free tin in accordance with RoHS.
- Functional electrical test to exclude errors on finishing elements or wires replace.
- Cables or wires retraction into protective tubes or hidden to shrink tubes.
- Product identification label or customer's request